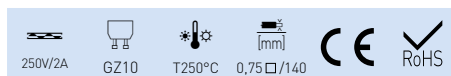
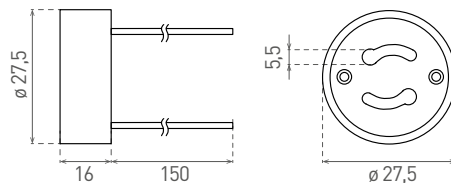


LH-GZ10

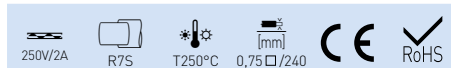
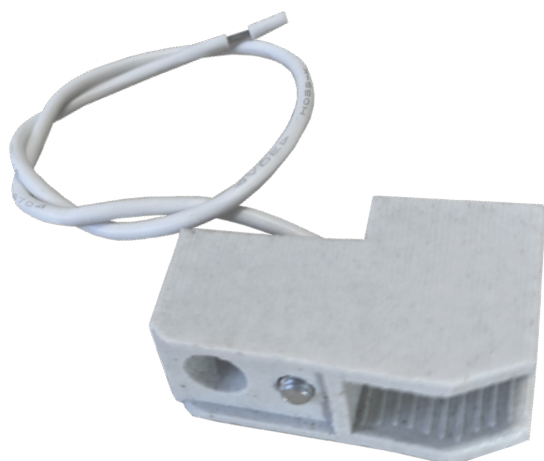
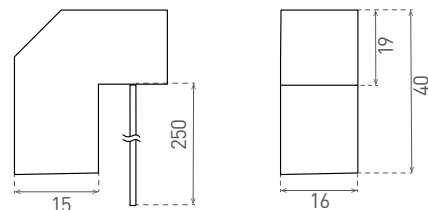
- KERAMICKÁ OBJÍMKA
- keramické tělo
- výborná tepelná odolnost
- pocínované měděné vodiče
- izolace ze silikonu




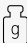



				
LH-GZ10	GX0S043	8592660103297	18	1/10/500

LH-R7S

- KERAMICKÁ OBJÍMKA
- keramické tělo
- výborná tepelná odolnost
- pocínované měděné vodiče
- izolace ze silikonu



				
LH-R7S	GX0S044	8592660103303	22	10/500

ELEKTROINSTALAČNÍ MATERIÁL